

# 2.1 Organisation of the Organism

## Question Paper

Course	CIE IGCSE Biology
Section	2. Organisation of the Organism
Topic	2.1 Organisation of the Organism
Difficulty	Medium

**Time allowed:** 20  
**Score:** /10  
**Percentage:** /100

**Question 1**

Which row of the table below correctly matches functions to some of the components in a root hair cell?

	<b>cell wall</b>	<b>cell membrane</b>	<b>mitochondria</b>
A	support	active transport	energy release
B	energy release	active transport	nutrition
C	support	active transport	nutrition
D	active transport	support	energy release

[1 mark]

**Question 2**

Which of the following orders would be correct showing the size of structures from biggest to smallest?

- A** chromosome → red blood cell → stomach → gene → nucleus
- B** stomach → red blood cell → gene → chromosome
- C** stomach → red blood cell → nucleus → chromosome → gene
- D** gene → chromosome → red blood cell → stomach

[1 mark]

**Question 3**

A list of subcellular structures is given below.

- 1** Nucleus
- 2** Ribosomes
- 3** Vacuole
- 4** Chloroplast

A plant cell and an animal cell are observed under a light microscope.

Which of the above structures would always be visible in a plant cell?

- A** 1, 2 & 4      **B** 1, 3 & 4      **C** 1 & 3 only      **D** 1 & 4 only

[1 mark]

**Question 4**

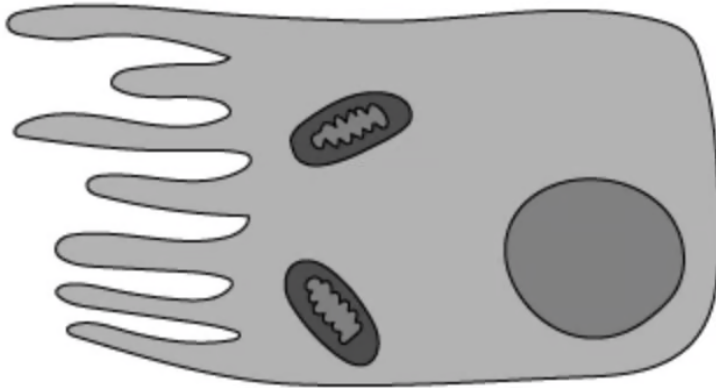
Which of the following terms would be correct to describe a leaf, a root and stem?

- A** Cell
- B** Tissue
- C** Organ
- D** Organ system

[1 mark]

**Question 5**

The diagram below shows part of an organism (ciliated epithelium).



What term would correctly describe the level of organisation of the structure in the diagram above?

- A** cell
- B** organelle
- C** organ
- D** organ system

[1 mark]

**Question 6**

The salivary glands contain cells which are responsible for producing salivary amylase, a digestive enzyme.

Which organelles would be present in large numbers in cells of the salivary glands?

- A** mitochondria and nuclei
- B** nuclei and ribosomes
- C** mitochondria and vacuoles
- D** mitochondria and ribosomes

[1 mark]

**Question 7**

Which row of the table below correctly describes the structures present in a bacterial cell?

	cell membrane	cell wall	chromosome	nucleus
A	X	✓	X	X
B	✓	✓	✓	X
C	✓	✓	X	X
D	✓	X	X	✓

[1 mark]

## Question 8

Which row of the table below correctly describes a spongy mesophyll cell?

	<b>Contains chloroplasts for photosynthesis</b>	<b>loses water by transpiration</b>	<b>ideal surface area for gas exchange</b>
A	<b>X</b>	✓	✓
B	✓	✓	<b>X</b>
C	✓	✓	✓
D	✓	<b>X</b>	<b>X</b>

[1 mark]

## Question 9

Which description of the liver below is correct?

- A** The liver is a cell, containing several tissues, which forms part of the digestive system.
- B** The liver is an organ, containing several systems, which forms part of the digestive tissue.
- C** The liver is an organ, containing several tissues, which forms part of the digestive system.
- D** The liver is a cell, containing several systems, which forms part of the digestive system.

[1 mark]

**Question 10**

Which row of the table below correctly matches a structure to its level of organisation within an organism?

	<b>Tissue</b>	<b>Organ</b>	<b>System</b>
A	phloem	small intestine	digestive
B	red blood cell	xylem	stomach
C	small intestine	sperm	digestive
D	root hair	leaf	heart

[1 mark]